

Wildlife Conservation Section

Wildlife Resources Division

Georgia Department of Natural Resources

Conserve nongame
wildlife by
implementing species
recovery plans,
conducting species
research and surveys,
identifying,
protecting and
managing critical
habitats.





Coastal Georgia Land Conservation with the NCWCG Program



Georgia Coastal Rare Wildlife

- Loggerhead Sea Turtles
- North Atlantic Right Whales
- Florida Manatee
- Migratory Shorebirds
- Gopher Tortoise
- Eastern Indigo Snake
- Hairy Rattlweed
- Radford's Mint
- Wood Stork
- American Oystercatcher
- Bald Eagle
- Red Knot
- Maritime Forest
- Saltmarsh



Coastal Georgia Shorelines

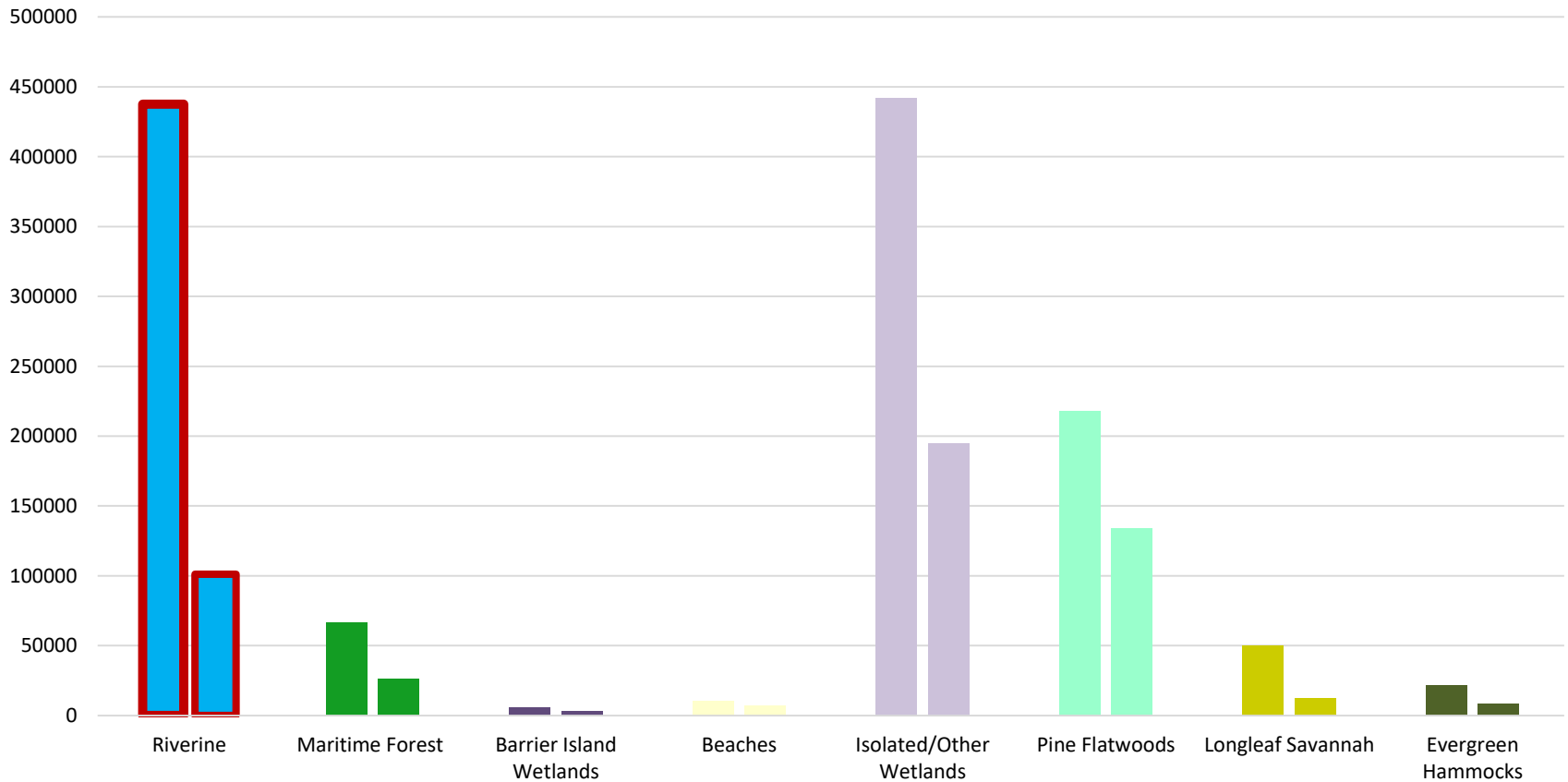


Former and current barrier islands





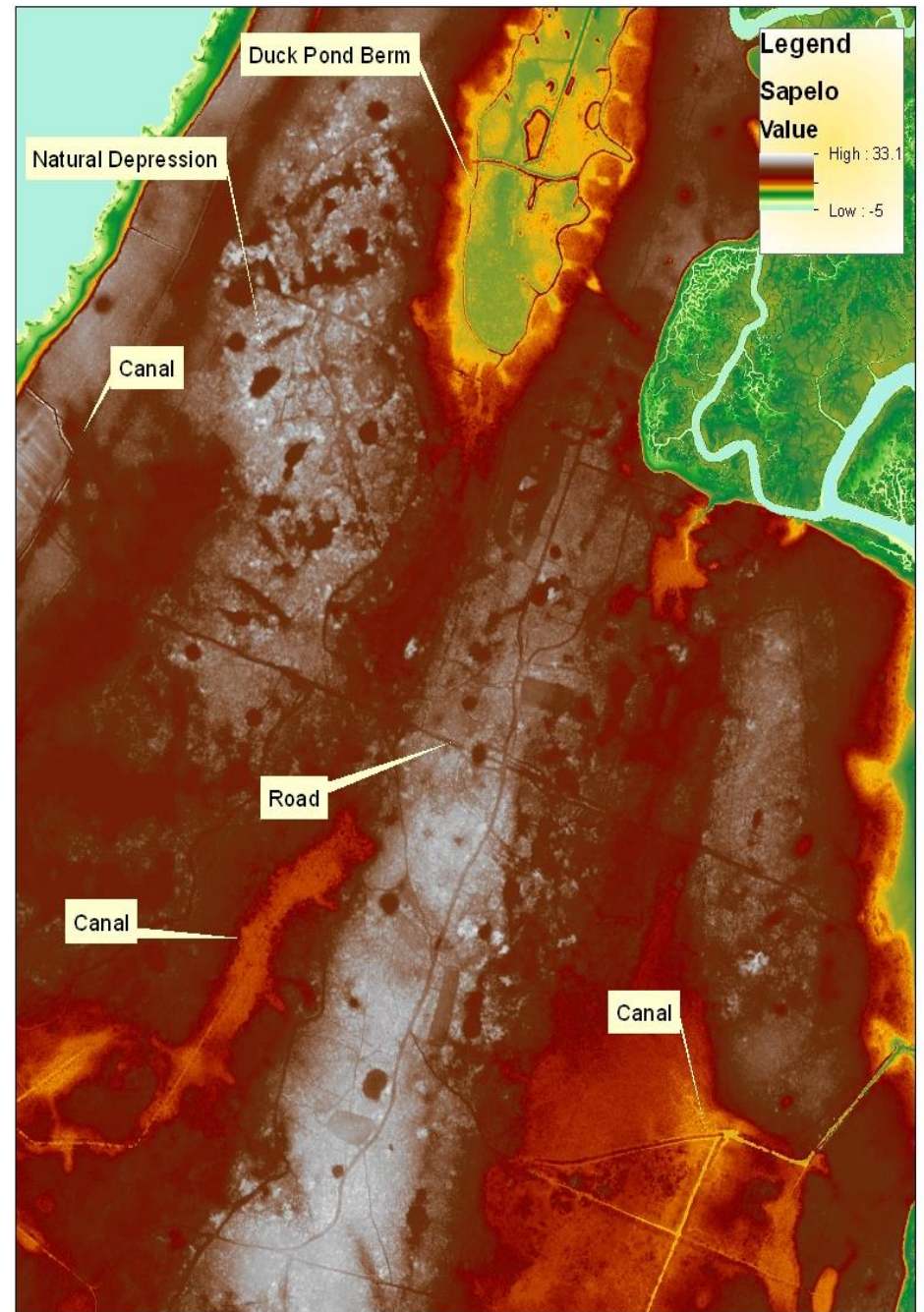
Natural Veg: Acres Total/Acres Protected





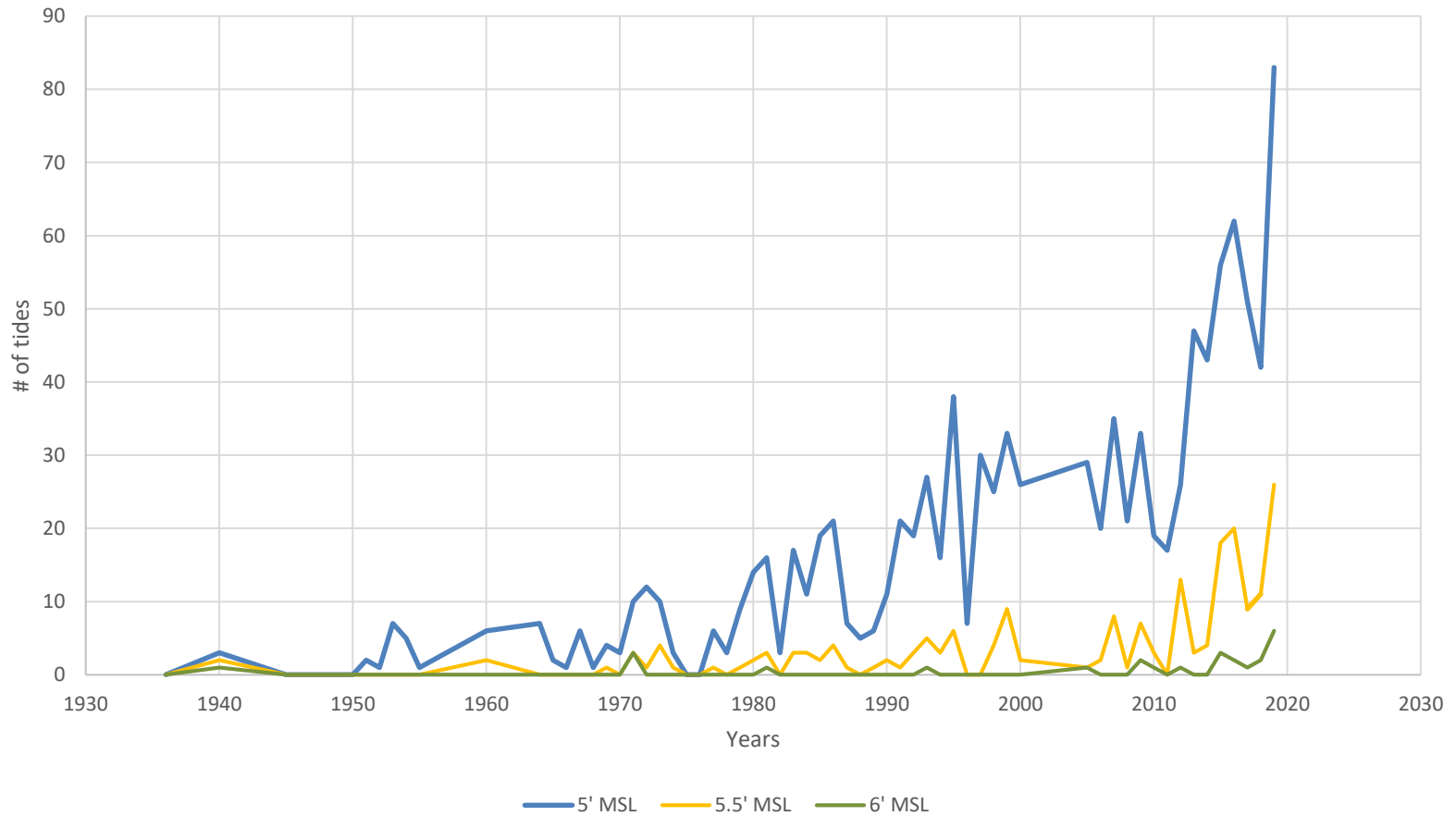
- 1.6 M acres natural vegetation (including 400K acres of saltmarsh)
 - 370 K upland acres
 - 1.2 M wetland acres
- **2.3 M acres (60%) converted to anthropogenic uses** (mostly uplands, flatwoods and depressional wetlands)
- Originally there were appx 530K longleaf uplands and 2 Million acres of flatwoods and depressional wetlands

- Ditching and draining of depressional wetlands
- Riverine harder to drain, but depressional (and other) draining affects all habitat types by lowering water table
- Wetland restoration is important

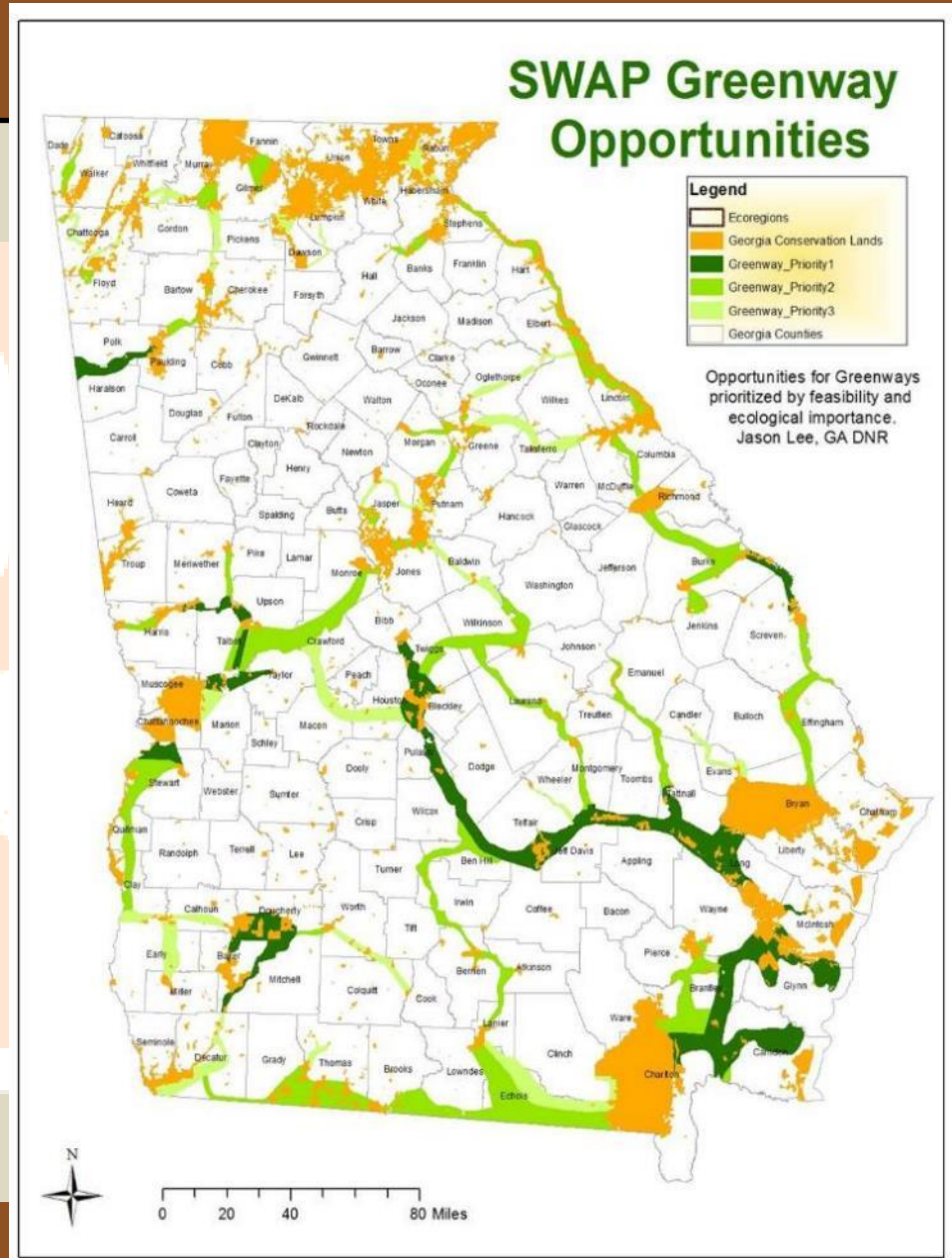




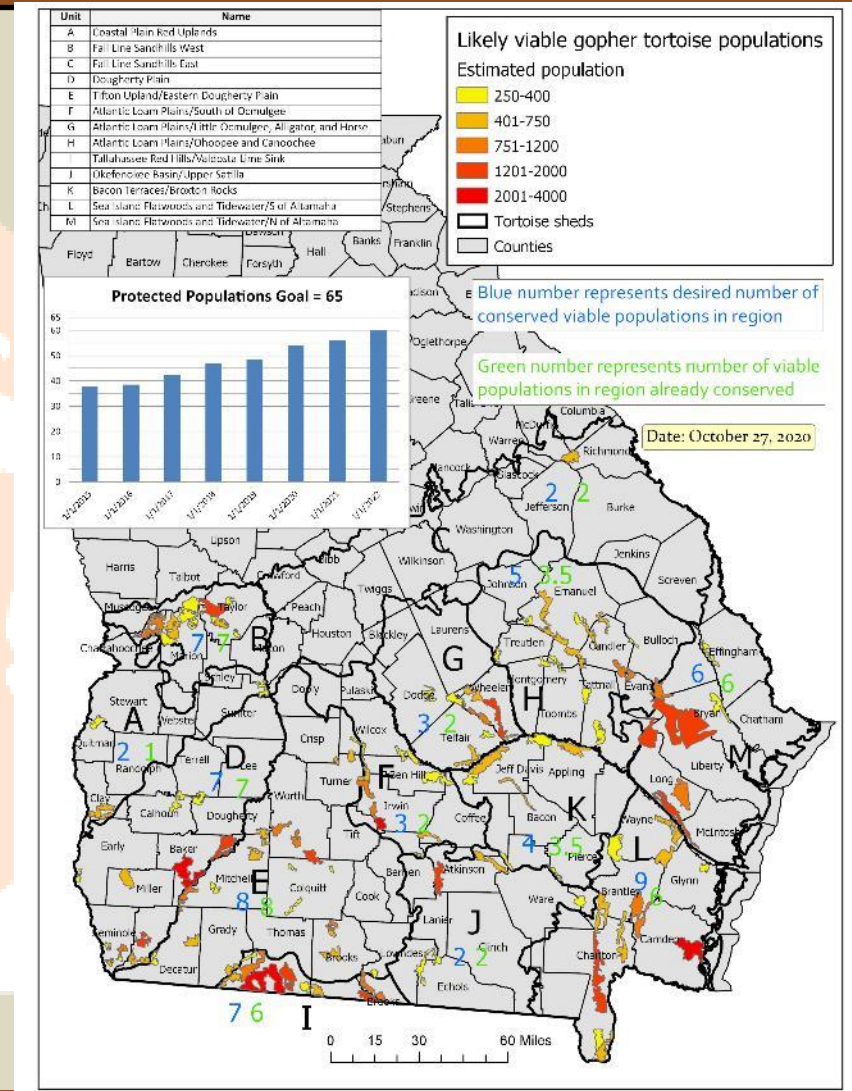
of Extreme Tides Per Year



- Currently 8.5%, or 3.1 M acres out of State's 37 M in Conservation
- Serve as corridors for many threatened and common species: RCW, Indigo Snake, Gopher Tortoise, Black Bear
- Connect up to adjacent States



Gopher Tortoise Initiative





What are we focusing on?

- Conserve and restore rare habitats/species
- Conserve and restore uplands
- Conserve and restore wetlands
- Preserve and create connectivity



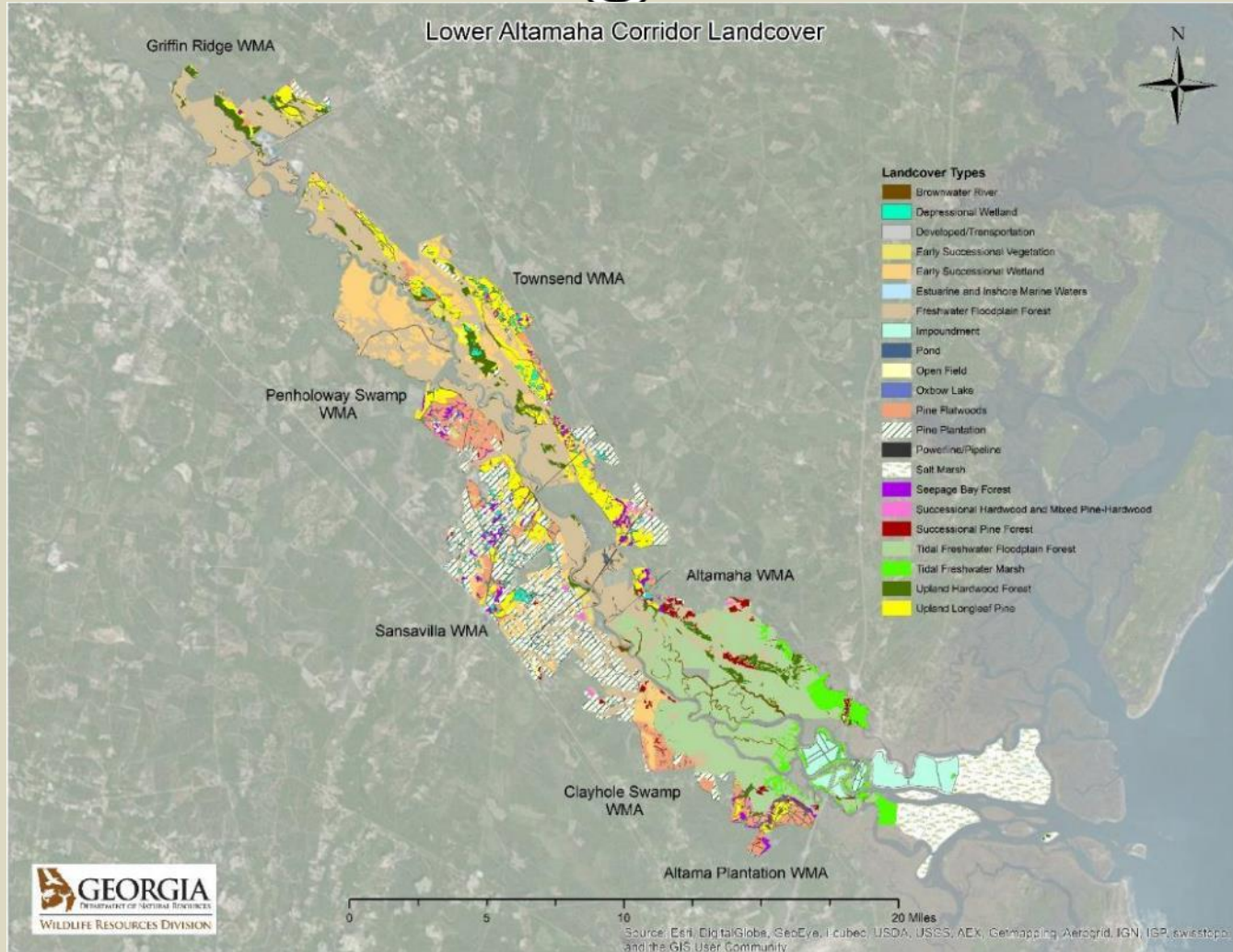
The Altamaha River

Undammed, drains quarter of State, 2nd largest river on Eastern Seaboard

More than 100 rare plants and animals, and over 50 natural communities

Named one of 75 last great places on Earth by TNC

Habitat Map





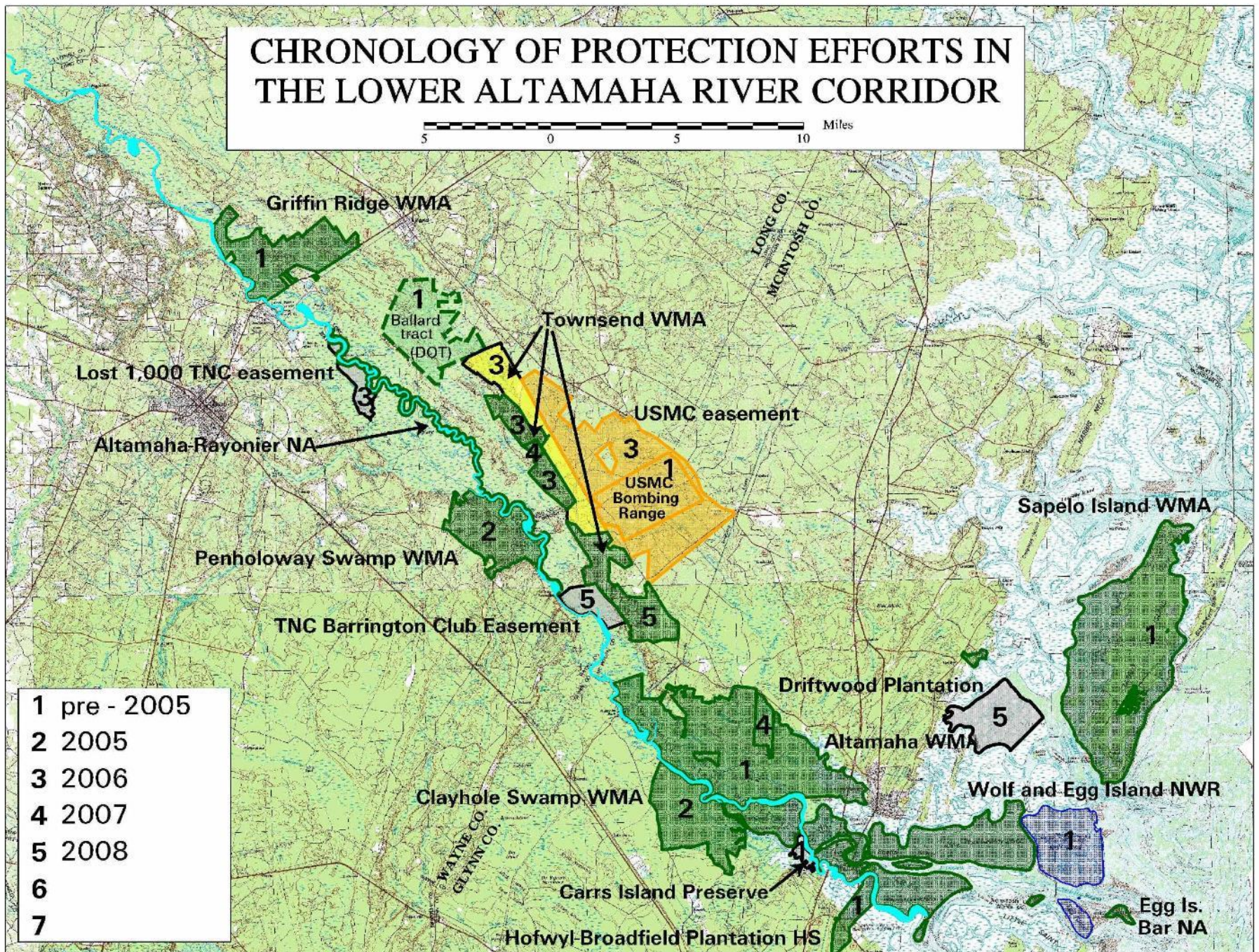
LOWER ALTAMAHA RIVER TIME LINE

CHRONOLOGY OF PROTECTION EFFORTS IN THE LOWER ALTAMAHA RIVER CORRIDOR

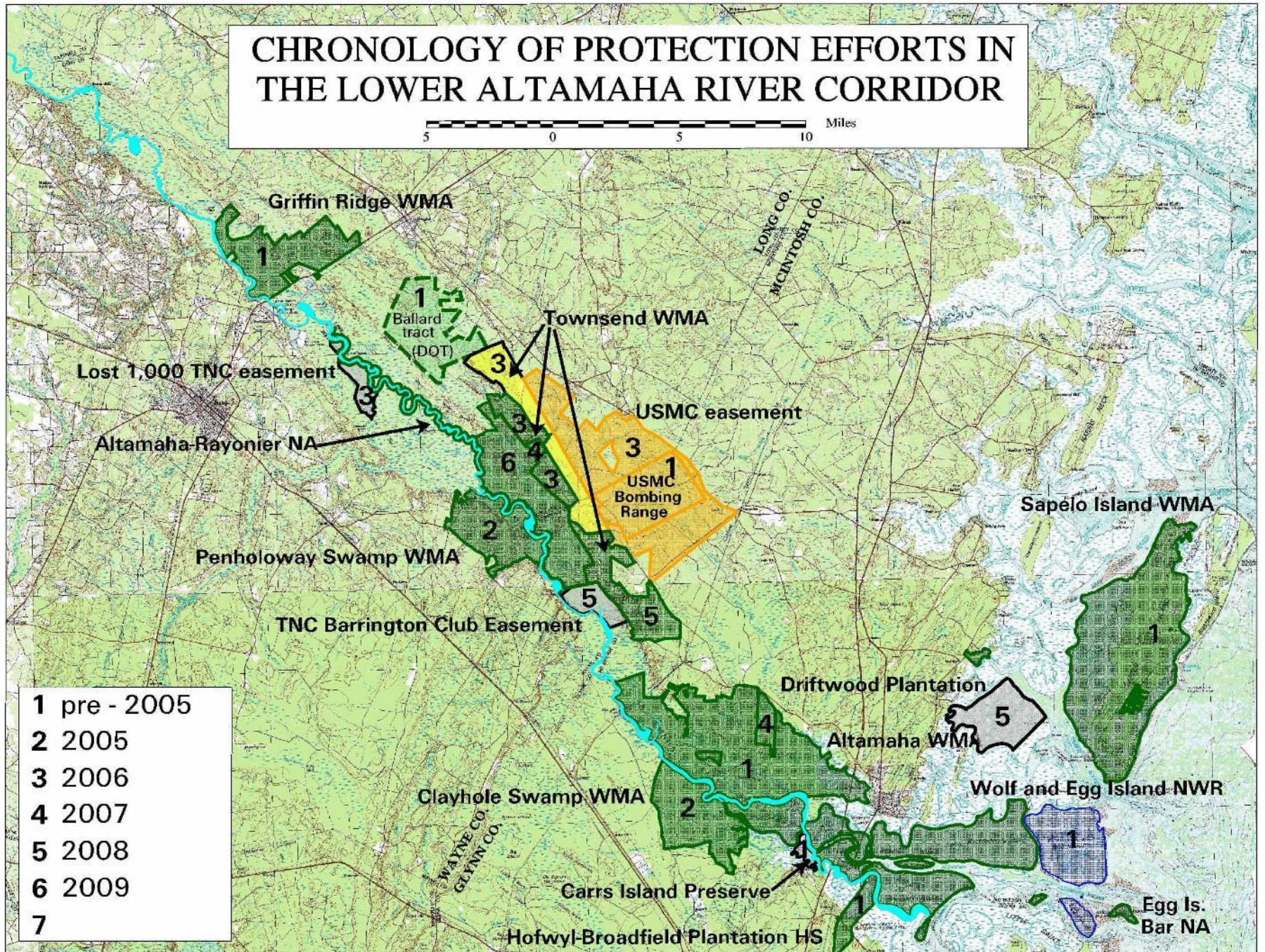
5 0 5 10 Miles



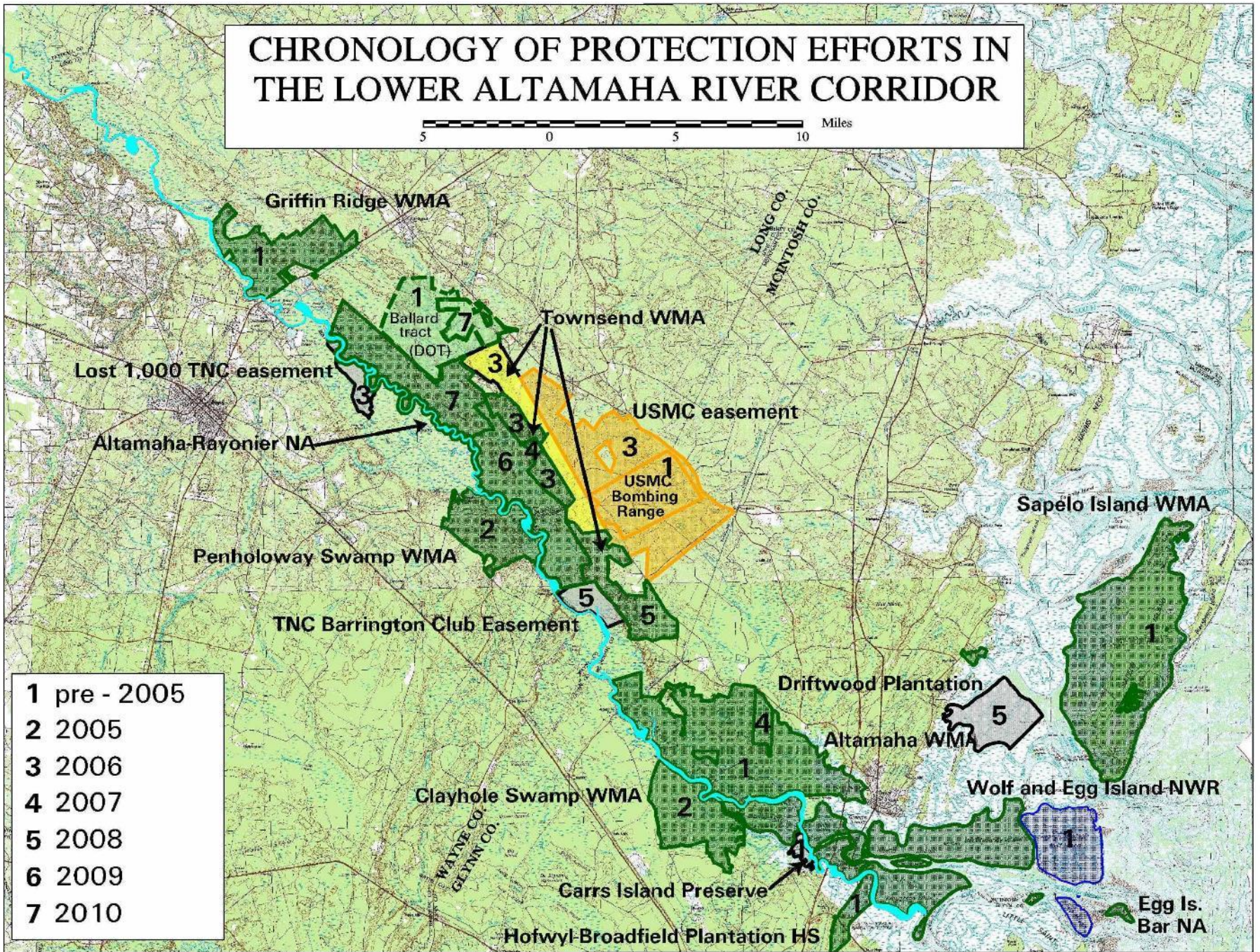
CHRONOLOGY OF PROTECTION EFFORTS IN THE LOWER ALTAMAHA RIVER CORRIDOR



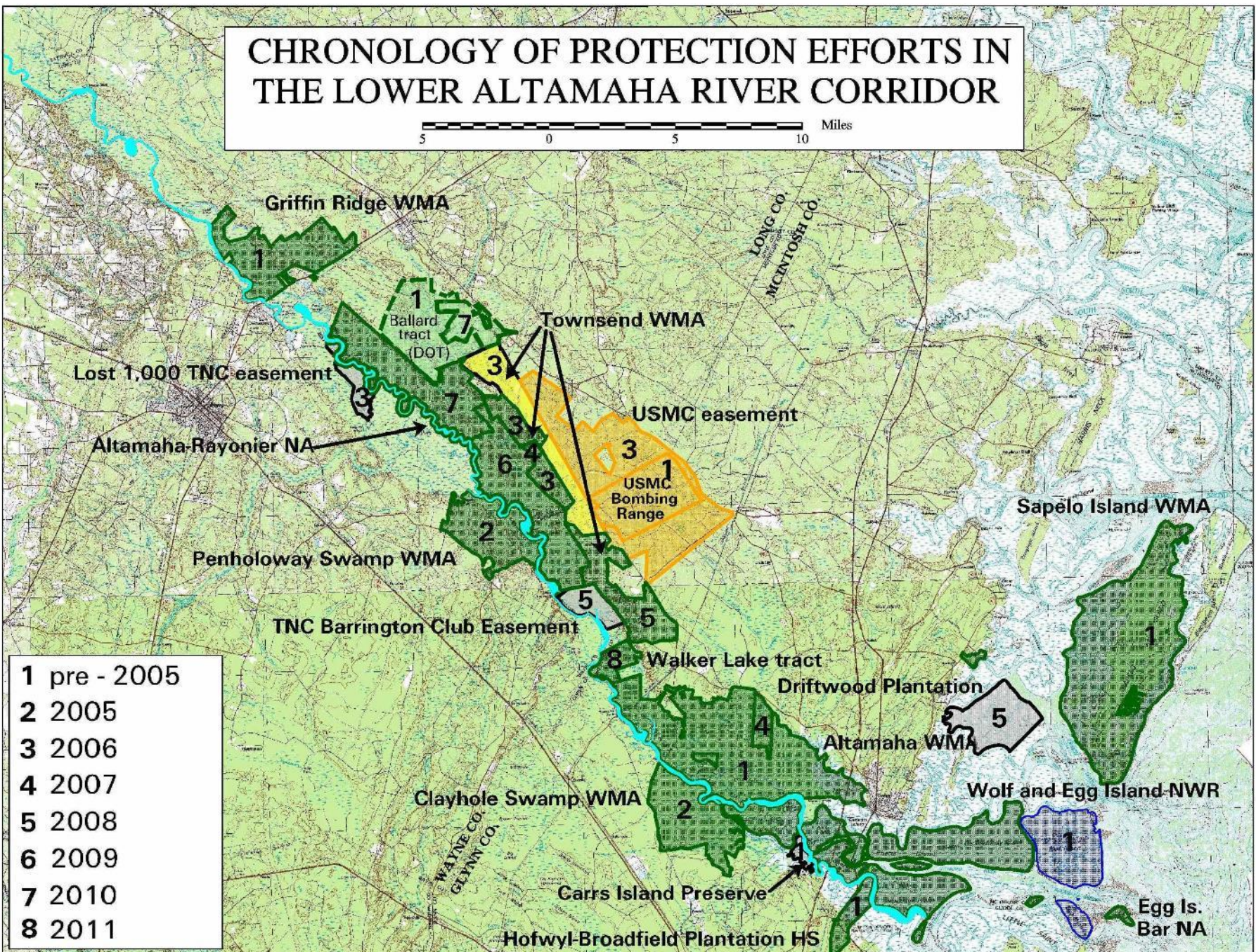
CHRONOLOGY OF PROTECTION EFFORTS IN THE LOWER ALTAMAHA RIVER CORRIDOR



CHRONOLOGY OF PROTECTION EFFORTS IN THE LOWER ALTAMAHA RIVER CORRIDOR

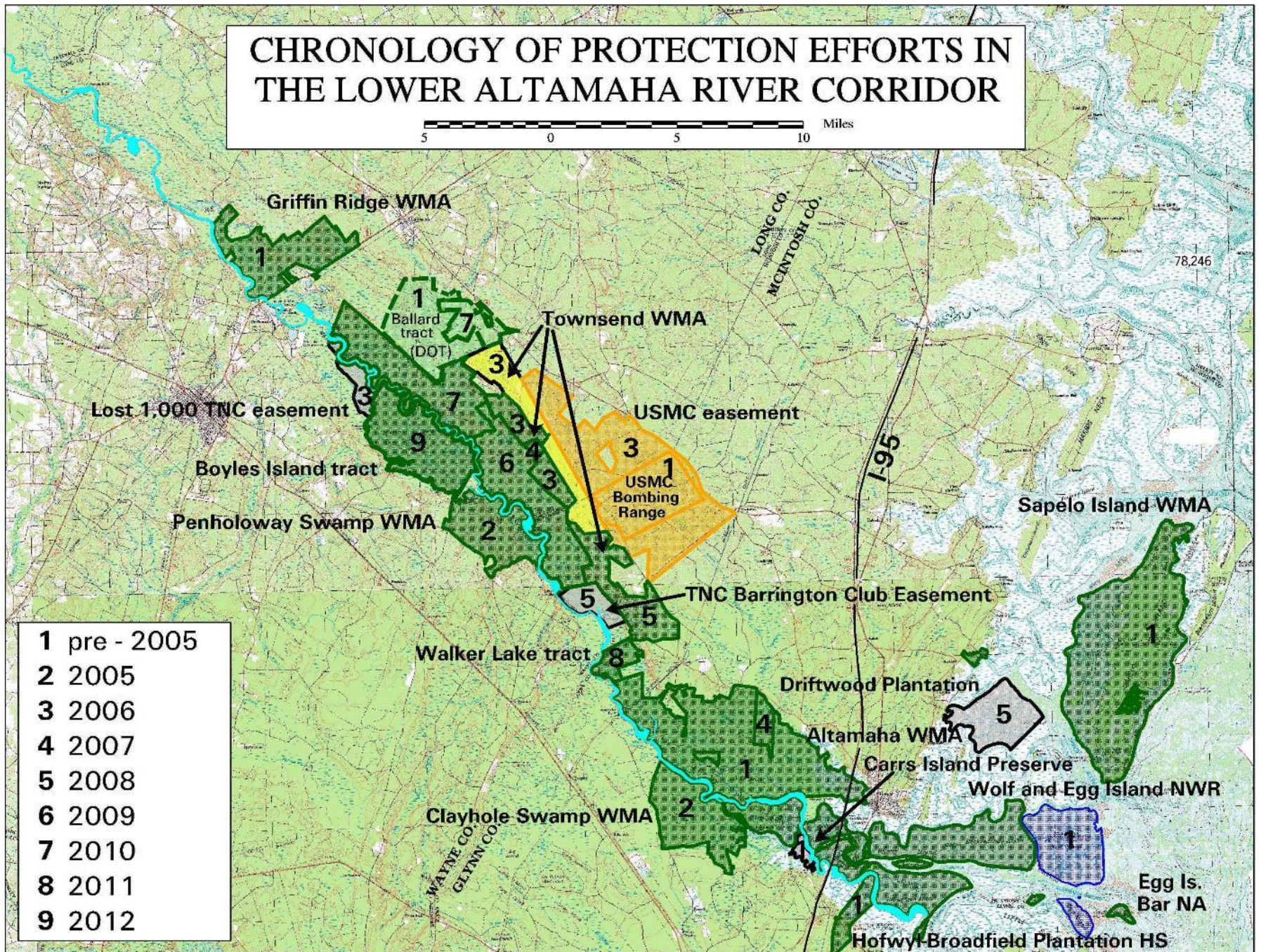


CHRONOLOGY OF PROTECTION EFFORTS IN THE LOWER ALTAMAHA RIVER CORRIDOR

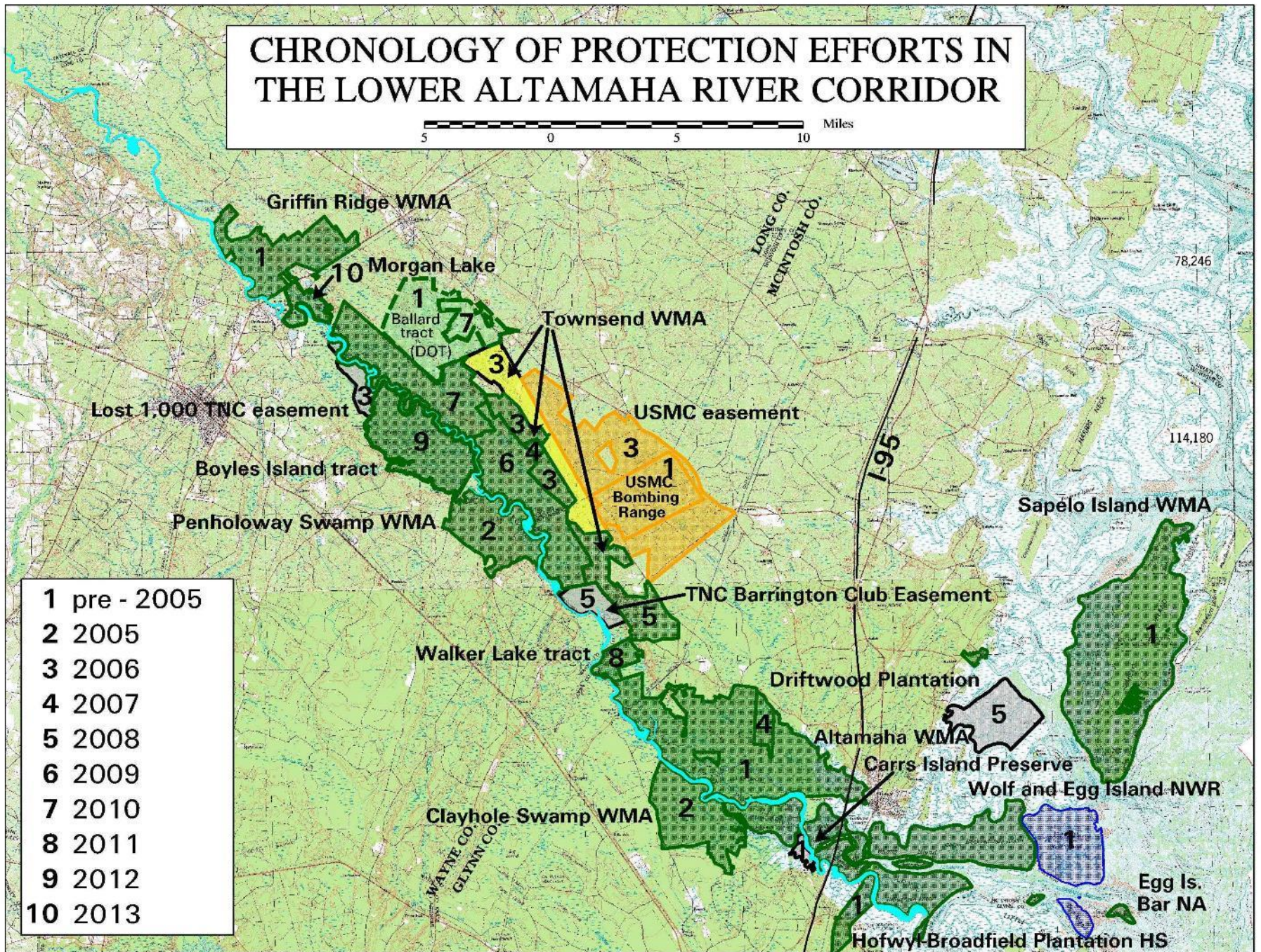


- 1 pre - 2005
- 2 2005
- 3 2006
- 4 2007
- 5 2008
- 6 2009
- 7 2010
- 8 2011

CHRONOLOGY OF PROTECTION EFFORTS IN THE LOWER ALTAMAHA RIVER CORRIDOR

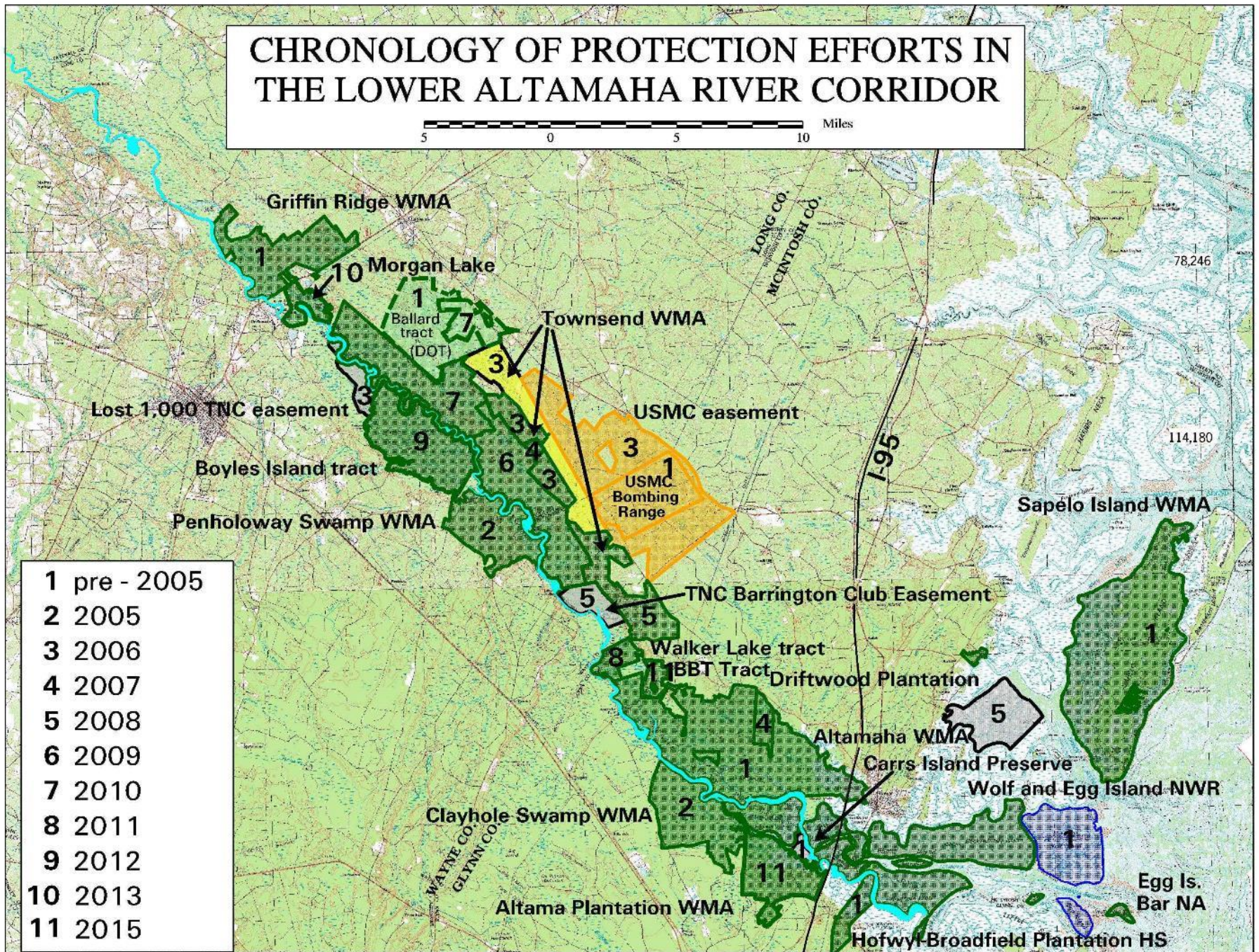


CHRONOLOGY OF PROTECTION EFFORTS IN THE LOWER ALTAMAHA RIVER CORRIDOR

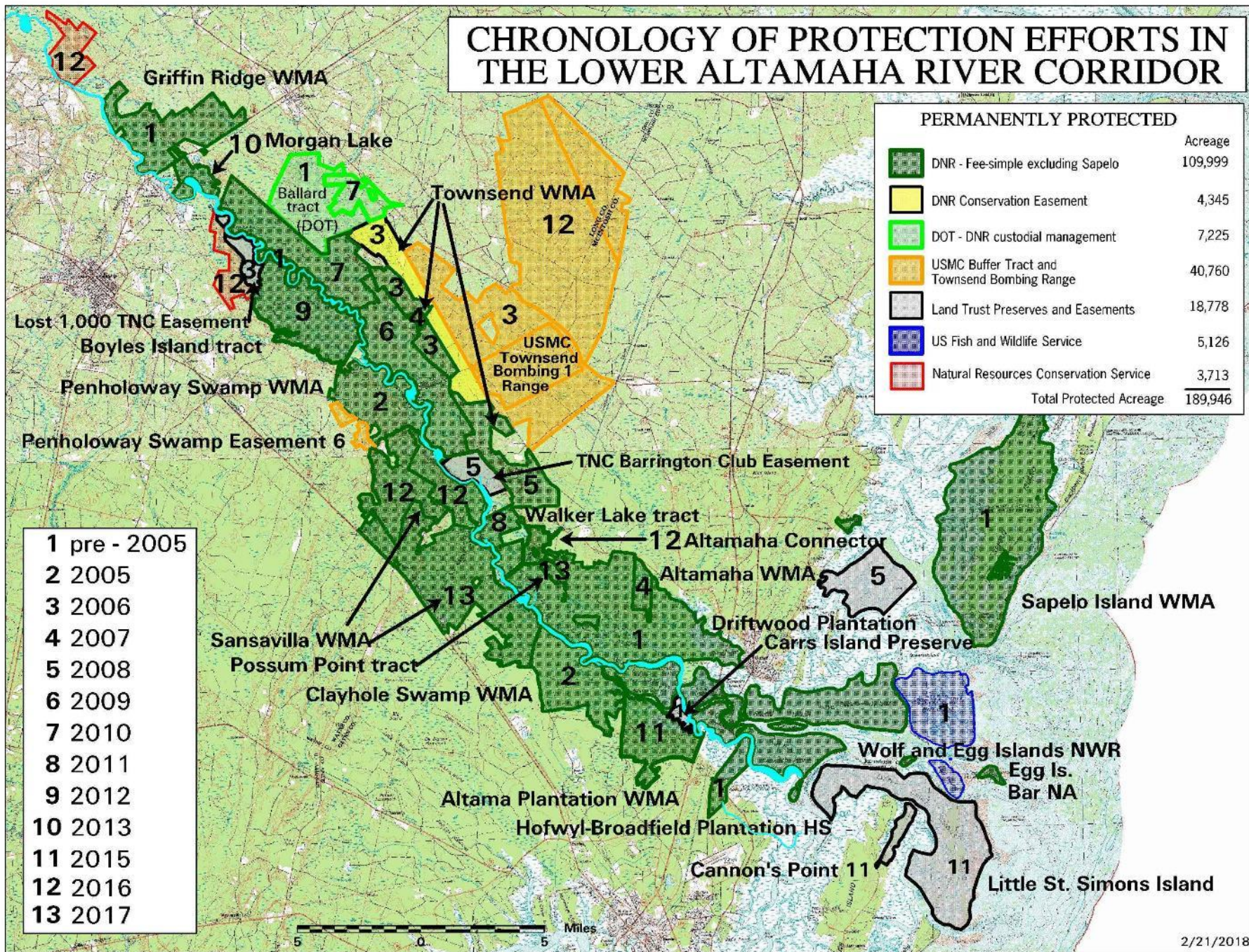


- 1 pre - 2005
- 2 2005
- 3 2006
- 4 2007
- 5 2008
- 6 2009
- 7 2010
- 8 2011
- 9 2012
- 10 2013

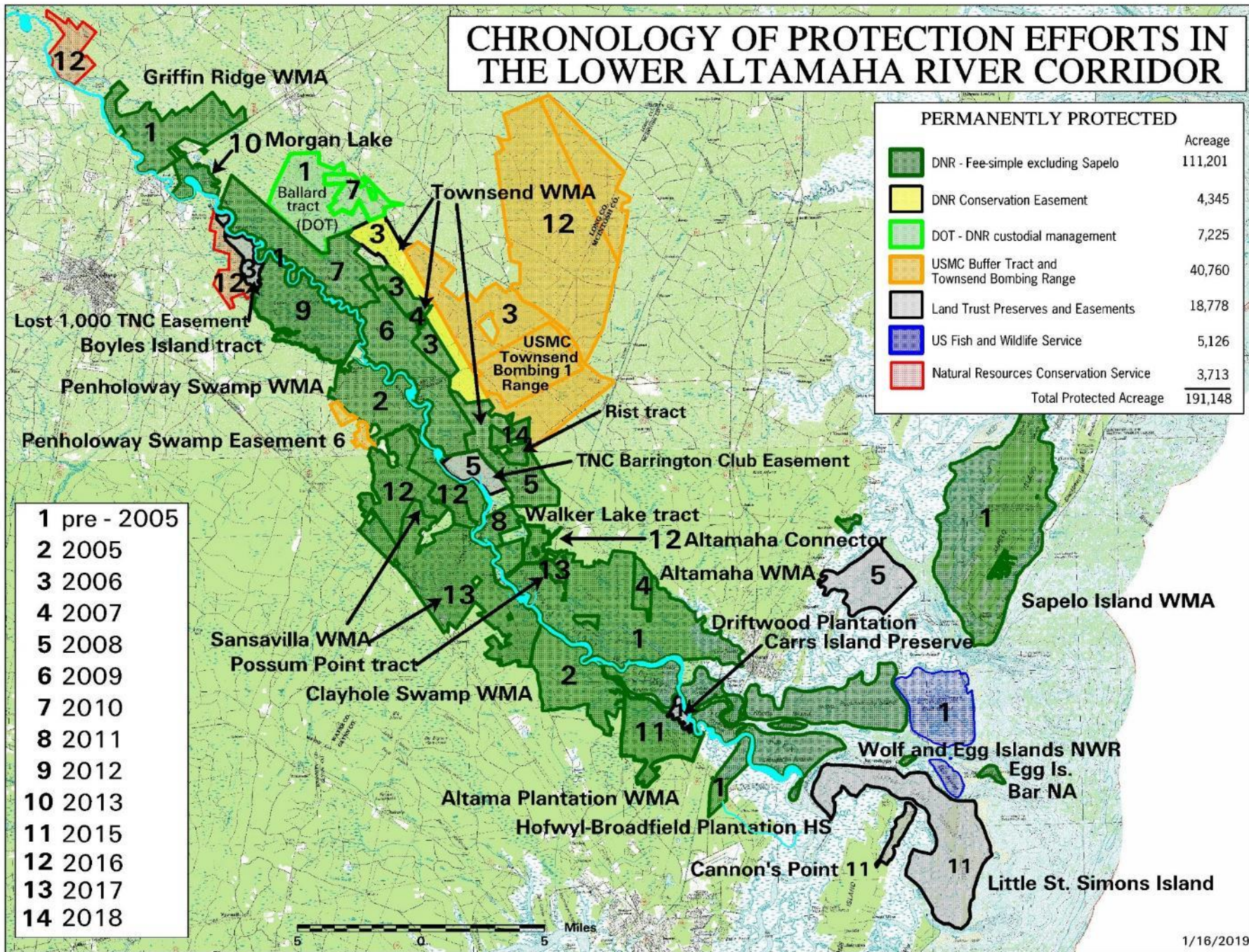
CHRONOLOGY OF PROTECTION EFFORTS IN THE LOWER ALTAMAHA RIVER CORRIDOR



CHRONOLOGY OF PROTECTION EFFORTS IN THE LOWER ALTAMAHA RIVER CORRIDOR



CHRONOLOGY OF PROTECTION EFFORTS IN THE LOWER ALTAMAHA RIVER CORRIDOR



CHRONOLOGY OF PROTECTION EFFORTS IN THE LOWER ALTAMAHA RIVER CORRIDOR

5 0 5 10 Miles



1 pre - 2005

2

3

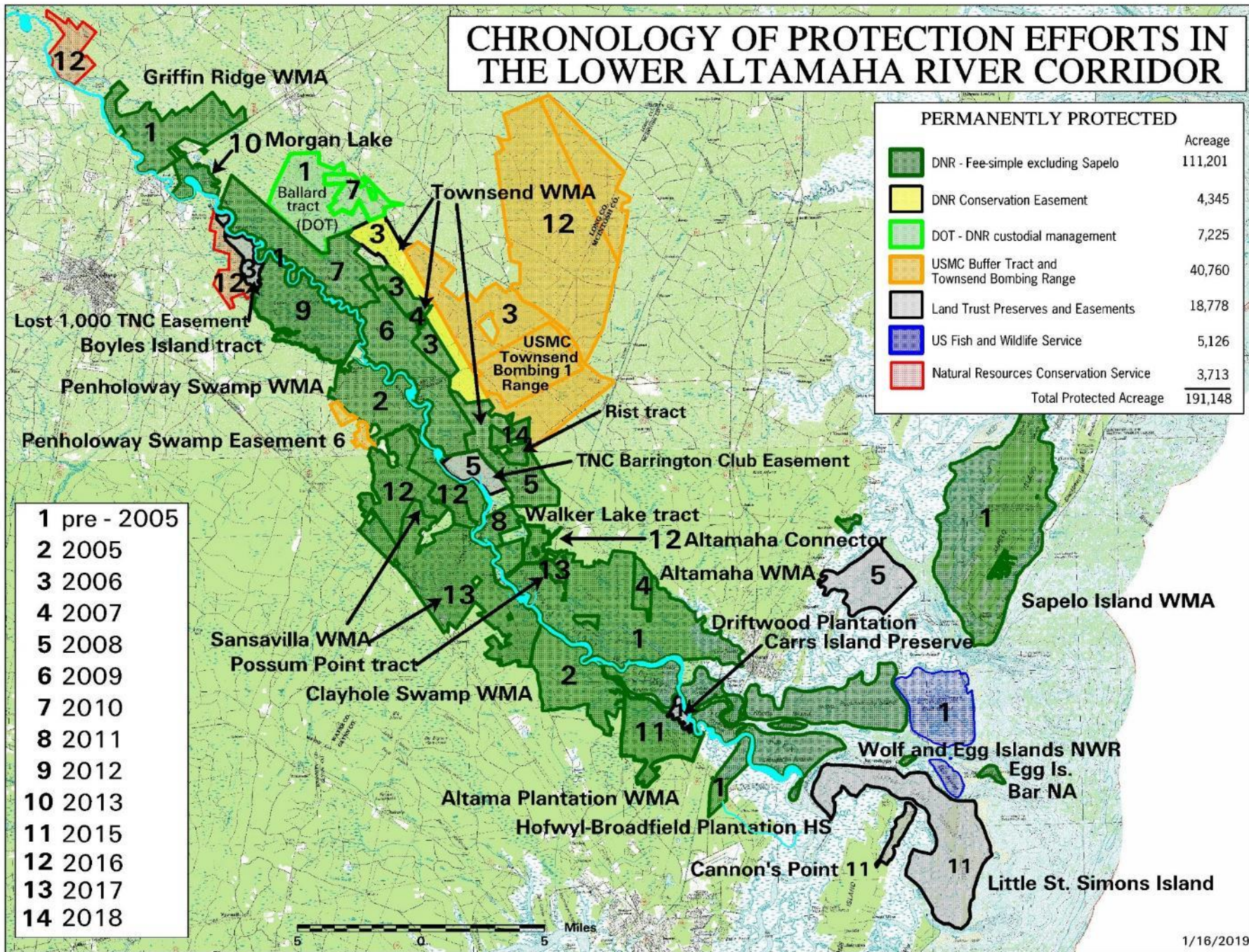
4

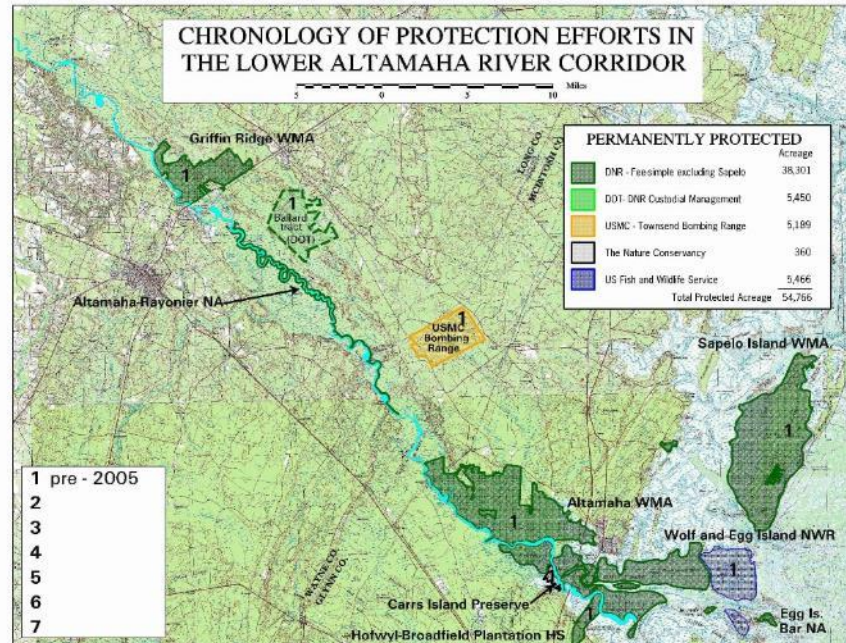
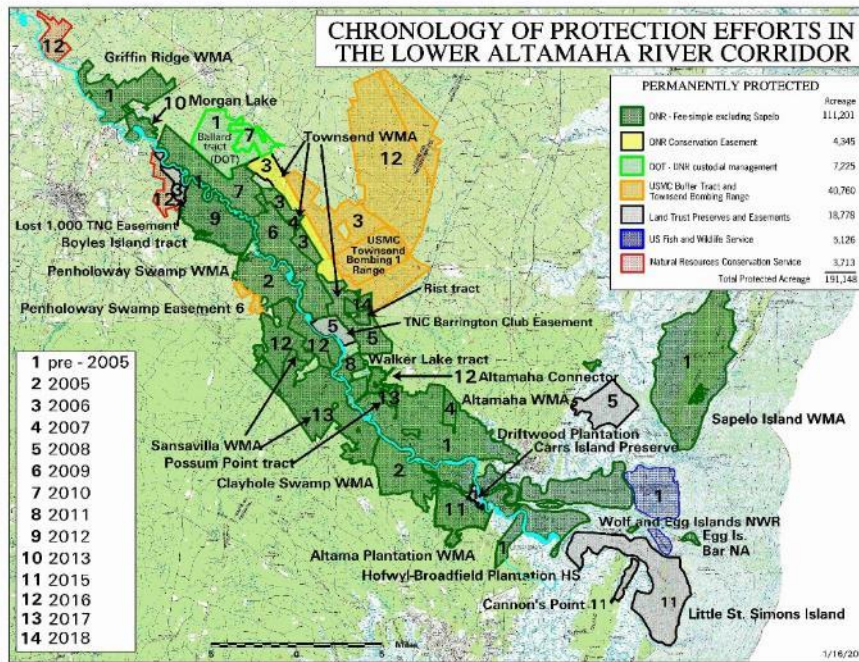
5

6

7

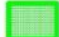
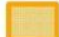

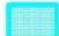
CHRONOLOGY OF PROTECTION EFFORTS IN THE LOWER ALTAMAHA RIVER CORRIDOR



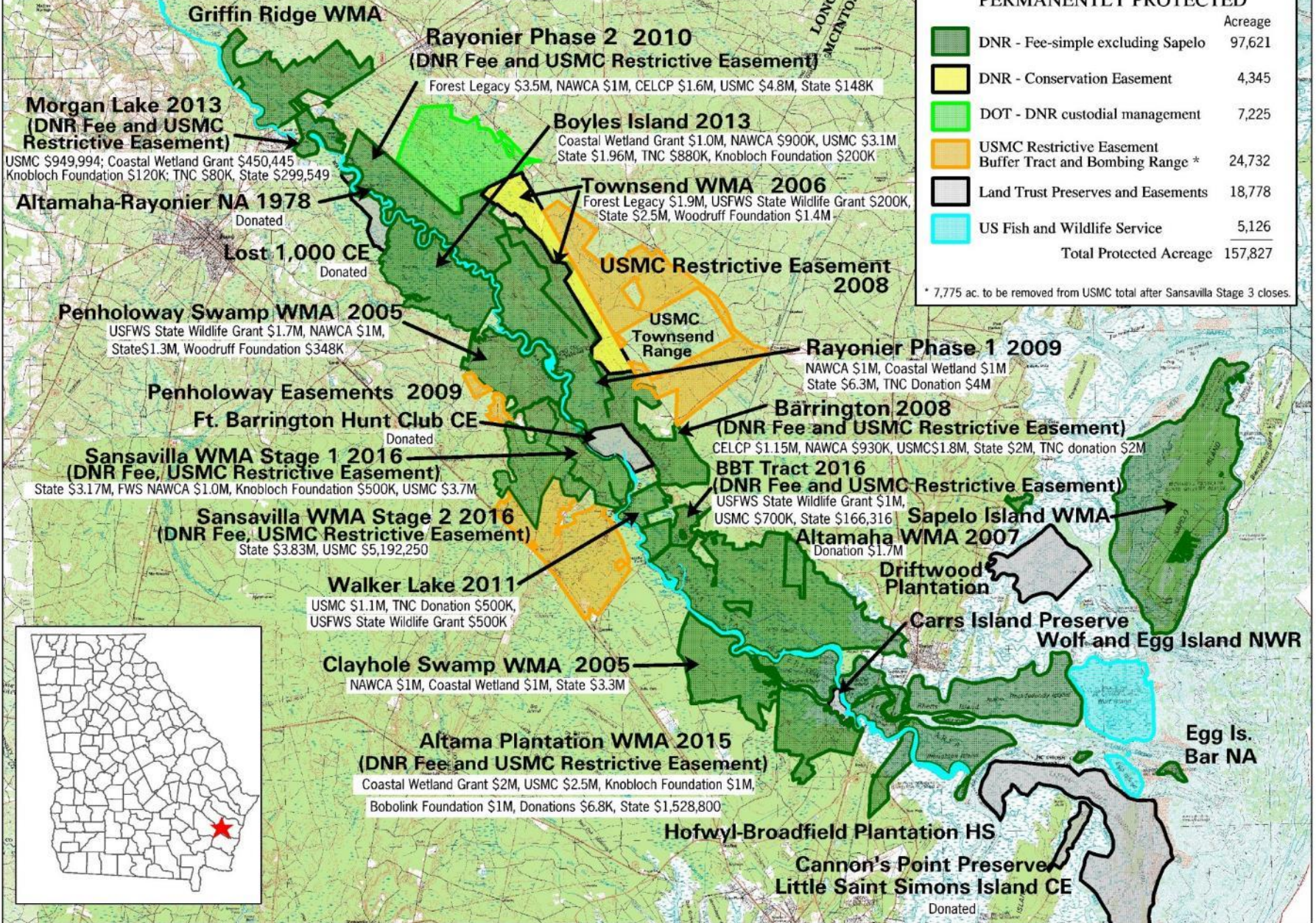


LOWER ALTAMAHA RIVER CORRIDOR FUNDING SOURCES

10 0 10 Miles 1/25/2017

PERMANENTLY PROTECTED	
	Acreage
 DNR - Fee-simple excluding Sapelo	97,621
 DNR - Conservation Easement	4,345
 DOT - DNR custodial management	7,225
 USMC Restrictive Easement Buffer Tract and Bombing Range *	24,732
 Land Trust Preserves and Easements	18,778
 US Fish and Wildlife Service	5,126
Total Protected Acreage	
157,827	

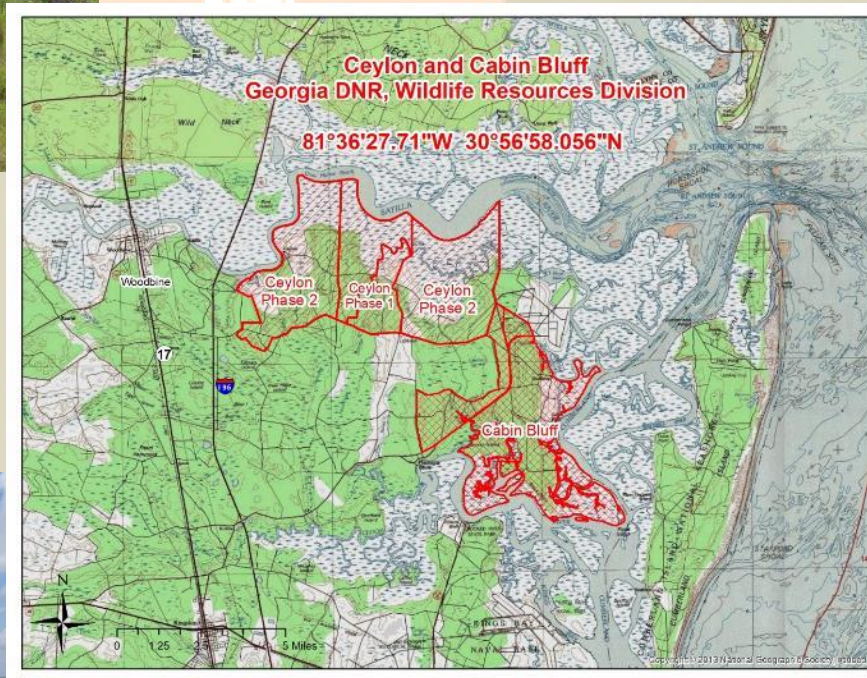
* 7,775 ac. to be removed from USMC total after Sansavilla Stage 3 closes.

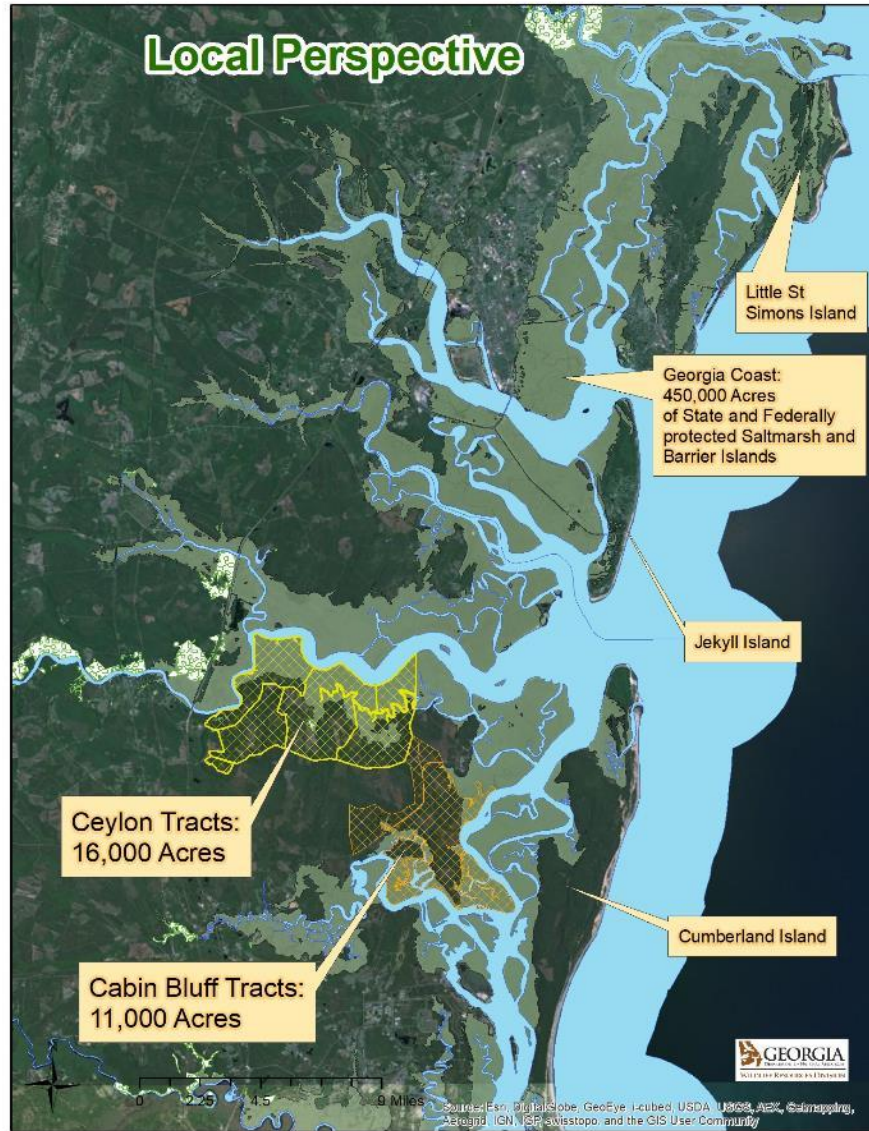




CEYLON AND CABIN BLUFF







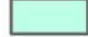

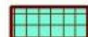
CEYLON & CABIN BLUFF CONSERVATION WITH FUND SOURCES

0 0.5 1 2 3 4 Miles

3/12/2021

Ceylon WMA (2020) Phase 1
 REPI 5M, TNC 2M, GOSP 700K
 STATE 2.8M

PERMANENTLY PROTECTED

	Acreage
 DNR/Navy Conserv. Easement	3,217
 DNR - fee simple	12,370
 DNR - leased	11,672
Total Acreage	27,259

Cabin Bluff (Private) (2020)
 NAWCA 500K, NCWCG 2M,
 REPI 4M

Ceylon WMA Phase 2

Cabin Bluff WMA (2021)
 GOSA 2.5M, Knoblock Fnd 1M, TNC 500K
 NCWCG 2M, REPI 4M,
 Forest Legacy 4M, NAWCA 1M,





- **22 NCWCGs totaling \$22 Million in funding**
- **These leveraged another 150M in funding**
- **92,459 total acres directly protected**
- **Over 150,000 acres more adjacent to these core lands protected**
- **Also connected to another 400k acres of protected saltmarsh and barrier island habitats**